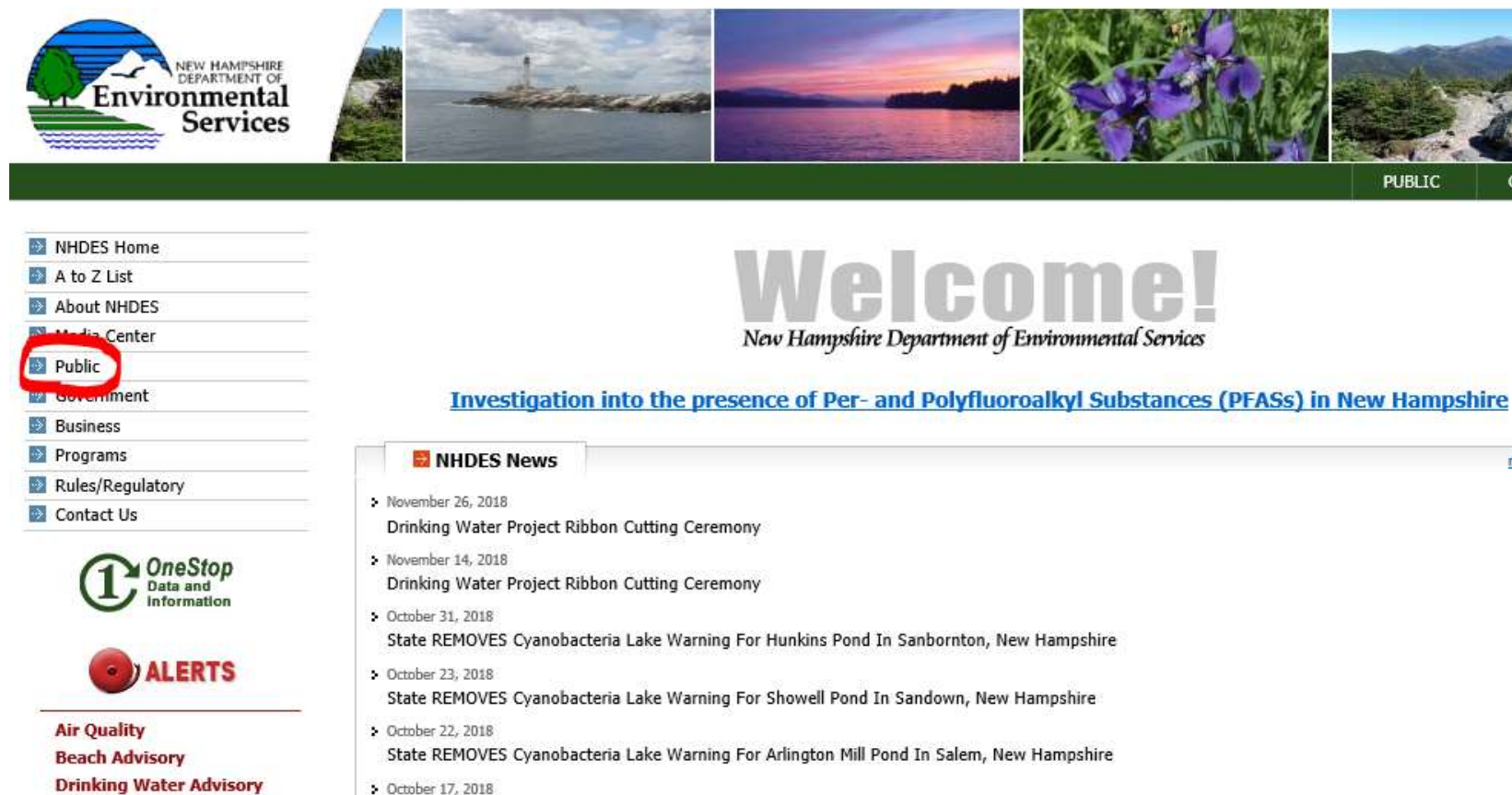


Lake Information Mapper Instructions

Part I: Getting to the Lake
Information Mapper Website

Step 1: Open the NH DES webpage (<https://www.des.nh.gov/index.htm>) and click on the *Public* tab on the left-hand side (circled in red below), bringing you to a new page (<https://www.des.nh.gov/public/index.htm>).



NEW HAMPSHIRE DEPARTMENT OF Environmental Services

Public

Welcome!
New Hampshire Department of Environmental Services

Investigation into the presence of Per- and Polyfluoroalkyl Substances (PFASs) in New Hampshire

NHDES News

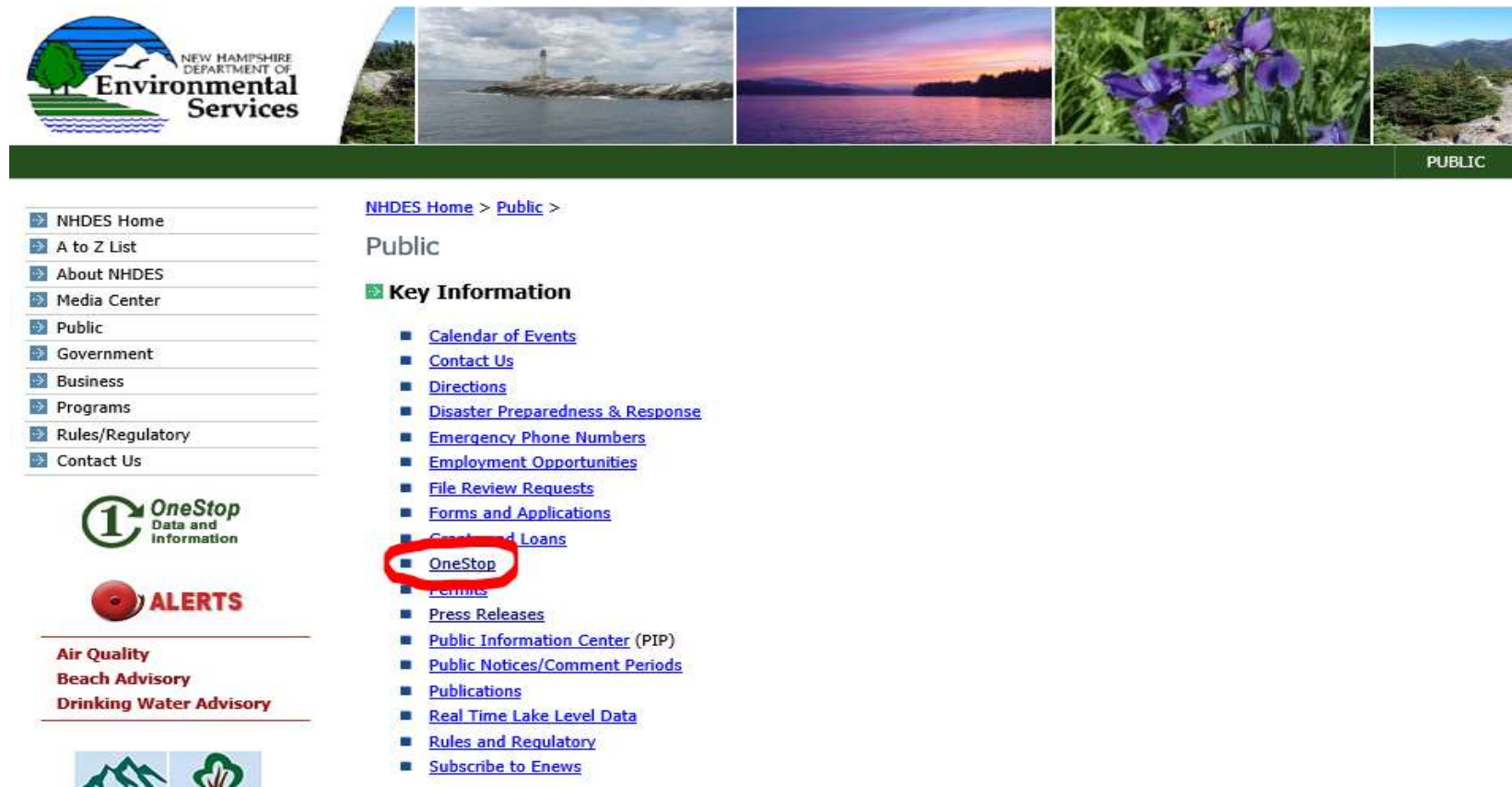
- November 26, 2018
Drinking Water Project Ribbon Cutting Ceremony
- November 14, 2018
Drinking Water Project Ribbon Cutting Ceremony
- October 31, 2018
State REMOVES Cyanobacteria Lake Warning For Hunkins Pond In Sanbornton, New Hampshire
- October 23, 2018
State REMOVES Cyanobacteria Lake Warning For Showell Pond In Sandown, New Hampshire
- October 22, 2018
State REMOVES Cyanobacteria Lake Warning For Arlington Mill Pond In Salem, New Hampshire
- October 17, 2018

OneStop Data and Information

ALERTS

- Air Quality**
- Beach Advisory**
- Drinking Water Advisory**

Step 2: Under *Key Information*, the first topic on the page, click the *OneStop* link. This will bring you to the “OneStop Data and Information” page (<https://www.des.nh.gov/onestop/index.htm>).



NEW HAMPSHIRE DEPARTMENT OF Environmental Services

PUBLIC

[NHDES Home](#) > [Public](#) >

Public

Key Information

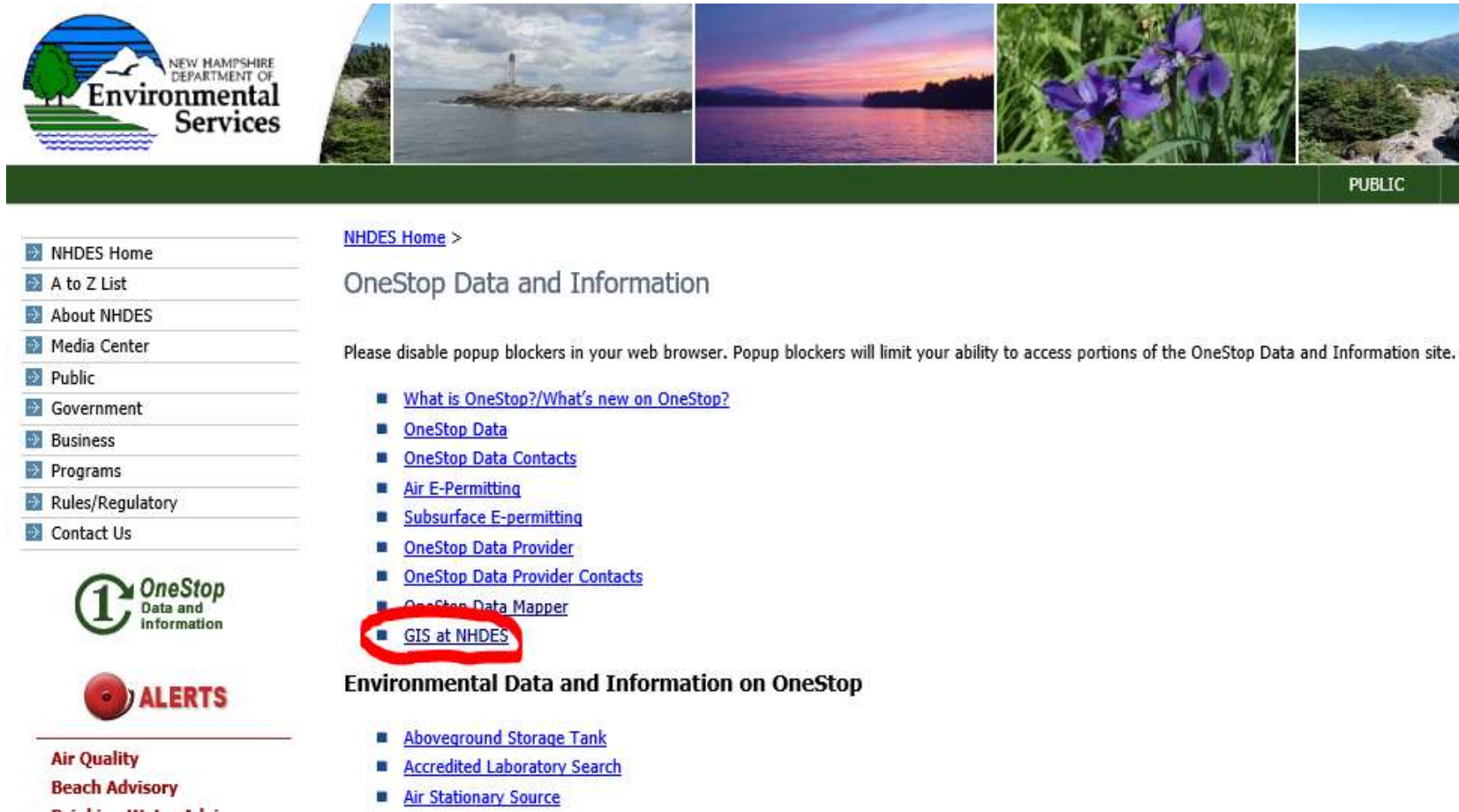
- [Calendar of Events](#)
- [Contact Us](#)
- [Directions](#)
- [Disaster Preparedness & Response](#)
- [Emergency Phone Numbers](#)
- [Employment Opportunities](#)
- [File Review Requests](#)
- [Forms and Applications](#)
- [Grants and Loans](#)
- [OneStop](#)**
- [Permits](#)
- [Press Releases](#)
- [Public Information Center \(PIP\)](#)
- [Public Notices/Comment Periods](#)
- [Publications](#)
- [Real Time Lake Level Data](#)
- [Rules and Regulatory](#)
- [Subscribe to Enews](#)

OneStop
Data and Information

ALERTS

Air Quality
Beach Advisory
Drinking Water Advisory

Step 3: In the first group of links, click the last one, *GIS at NHDES*, which will bring you to a new page (<https://www.des.nh.gov/onestop/gis.htm>).



NEW HAMPSHIRE DEPARTMENT OF Environmental Services

PUBLIC

- NHDES Home
- A to Z List
- About NHDES
- Media Center
- Public
- Government
- Business
- Programs
- Rules/Regulatory
- Contact Us

OneStop Data and Information

Please disable popup blockers in your web browser. Popup blockers will limit your ability to access portions of the OneStop Data and Information site.

- [What is OneStop?/What's new on OneStop?](#)
- [OneStop Data](#)
- [OneStop Data Contacts](#)
- [Air E-Permitting](#)
- [Subsurface E-permitting](#)
- [OneStop Data Provider](#)
- [OneStop Data Provider Contacts](#)
- [OneStop Data Mapper](#)
- [GIS at NHDES](#)

Environmental Data and Information on OneStop

- [Aboveground Storage Tank](#)
- [Accredited Laboratory Search](#)
- [Air Stationary Source](#)

OneStop Data and Information

ALERTS

Air Quality

Beach Advisory

Step 4: From the “GIS at NHDES” page, click on the link *NHDES: Lake Information Mapper*, located in the group of links seen underneath the Earth picture. This will bring you to the Lake Information Mapper site (<http://nhdes.maps.arcgis.com/apps/webappviewer/index.html?id=1f45dc20877b4b959239b8a4a60ef540>).



PUBLIC GOVERNMENT

- NHDES Home
- A to Z List
- About NHDES
- Media Center
- Public
- Government
- Business
- Programs
- Rules/Regulatory
- Contact Us



Air Quality
Beach Advisory
Drinking Water Advisory



New Hampshire
Environmental

[NHDES Home](#) > [OneStop Data and Information](#) >

GIS at NHDES

Welcome to the New Hampshire Department of Environmental Services' gateway to GIS (geographic) data. Easy access to quality geographic data and mapping tools is supported by the efforts of NHDES staff and the NHDES GIS Team.

Get GIS Data

GIS data is available for viewing and download in the new [OneStop Data Mapper](#), developed and hosted by NHDES and [NH GRANIT](#). Please [click here for a list of GIS data available](#). Additional data may be available by contacting NHDES GIS at gis@des.nh.gov.

View GIS Maps

The NHDES OneStop Data Mapper displays OneStop data in a single, easy-to-use mapping tool.

[NHDES OneStop Data Mapper](#)



Additional NHDES GIS data can be viewed in program-specific interactive maps.

[NHDES ArcGIS Online Maps](#)

- [Shoreland Act Protected Rivers Interactive Map](#)
- [NEW! Urbanized Shoreland Areas Interactive Map](#)
- [NEW! Aquatic Restoration Web Mapper](#)
- [This Is New Hampshire Story Map](#)
- [2016 Surface Water Quality Assessment Viewer](#)
- [2014 Surface Water Quality Assessment Viewer](#)
- [2012 Surface Water Quality Assessment Viewer](#)
- [NHDES Watershed Assessment Web Map](#)
- [NHDES: Lake Information Mapper](#)
- [Small Watershed Watershed Assistance Grants](#)
- [Great Bay Estuary Eelgrass](#)
- [Boat Pumpout Facilities](#)

Lake Information Mapper Instructions


Part II: Using the Lake Information Mapper

Using Northwood Lake in Northwood as an example.

A basic set of instructions will appear when you arrive at the Lake Information Mapper webpage.

Lake Information Mapper

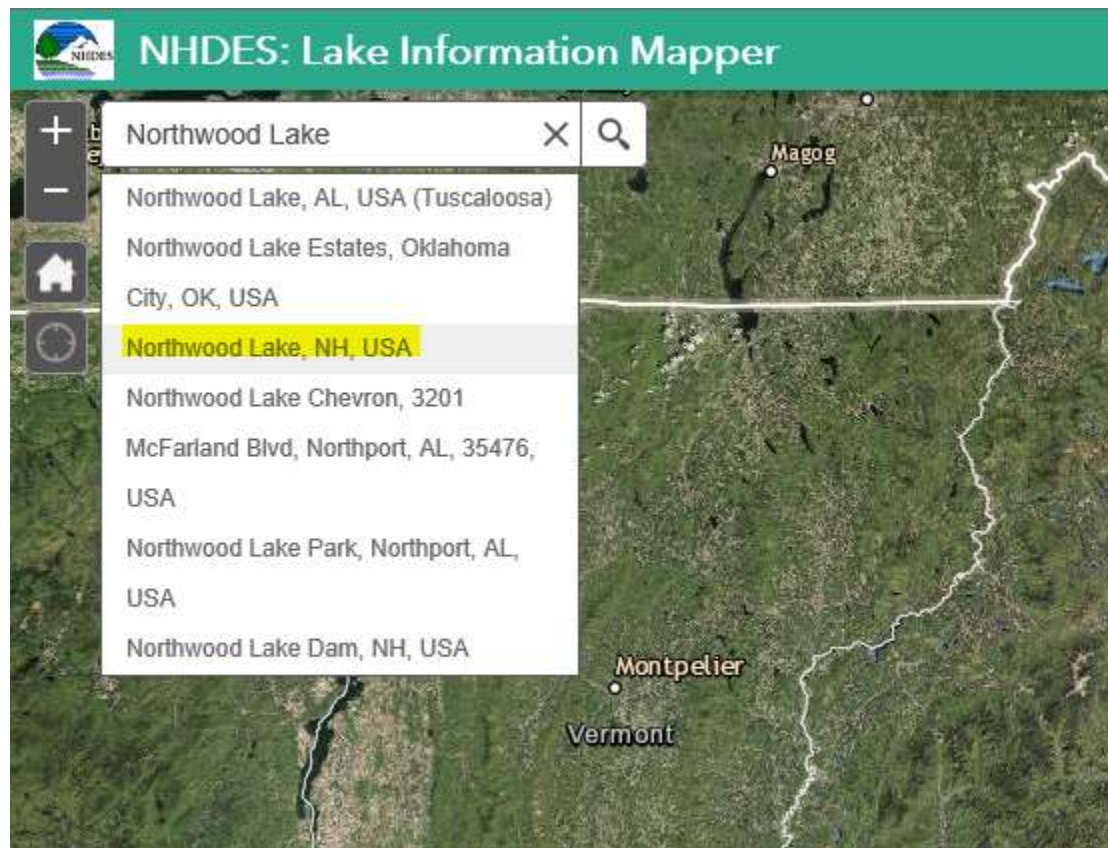
This interactive map allows the user to access water quality information of individual waterbodies around New Hampshire. By zooming in and clicking on a waterbody of interest, the user has access to historic and current Lake Trophic Survey reports, the most recent Volunteer Lake Assessment Program (VLAP) reports, Total Maximum Daily Load (TMDL) reports, ice cover history, cyanobacteria bloom history, Watershed Based Plans, Diagnostic Feasibility Studies, and information on known invasive aquatic species.



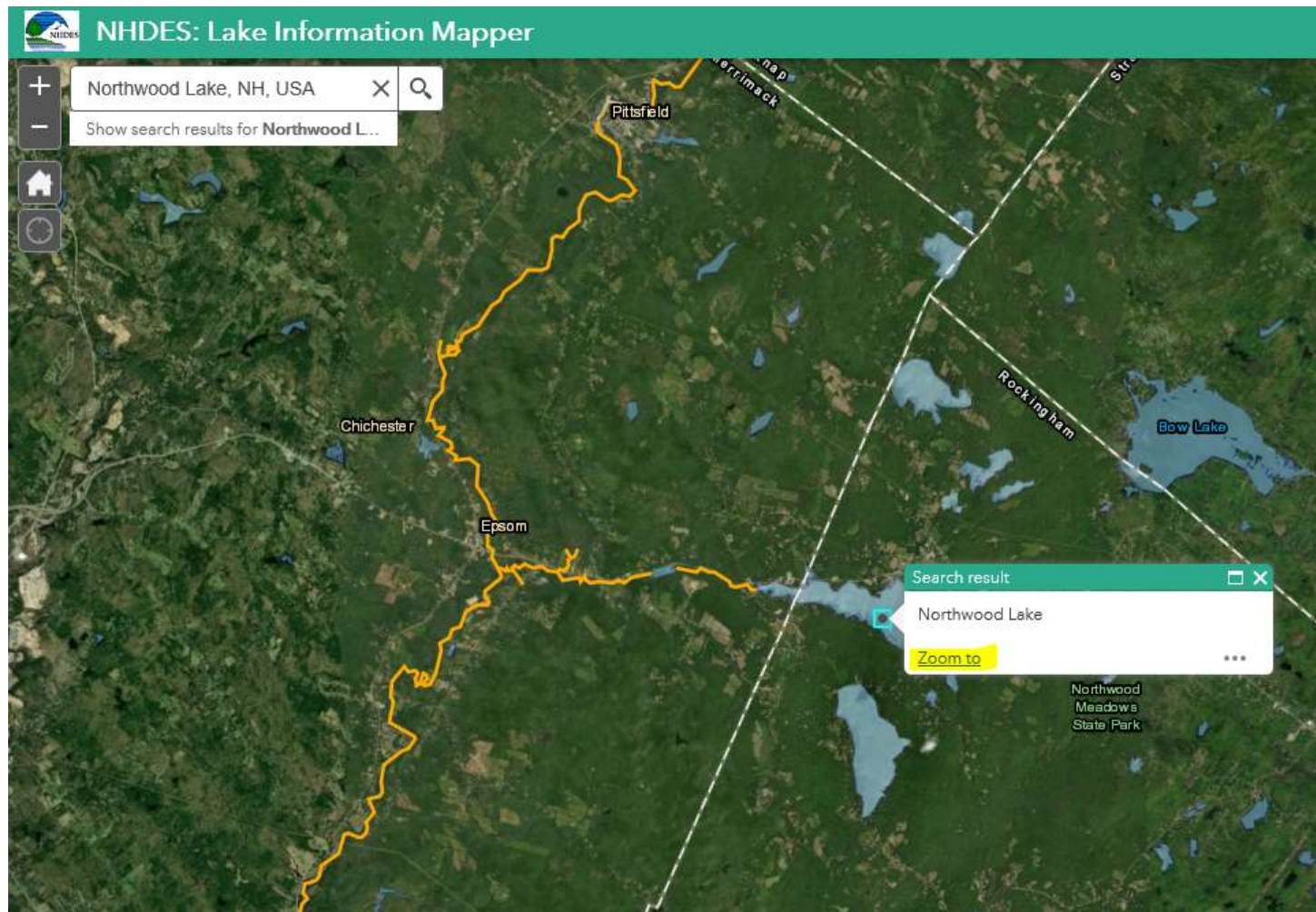
For additional information, contact [Kirsten Nelson](#) or dial (603) 271-1152.
Note: If the Mapper is not loading, please try clearing your browser history and reloading the Mapper.

OK

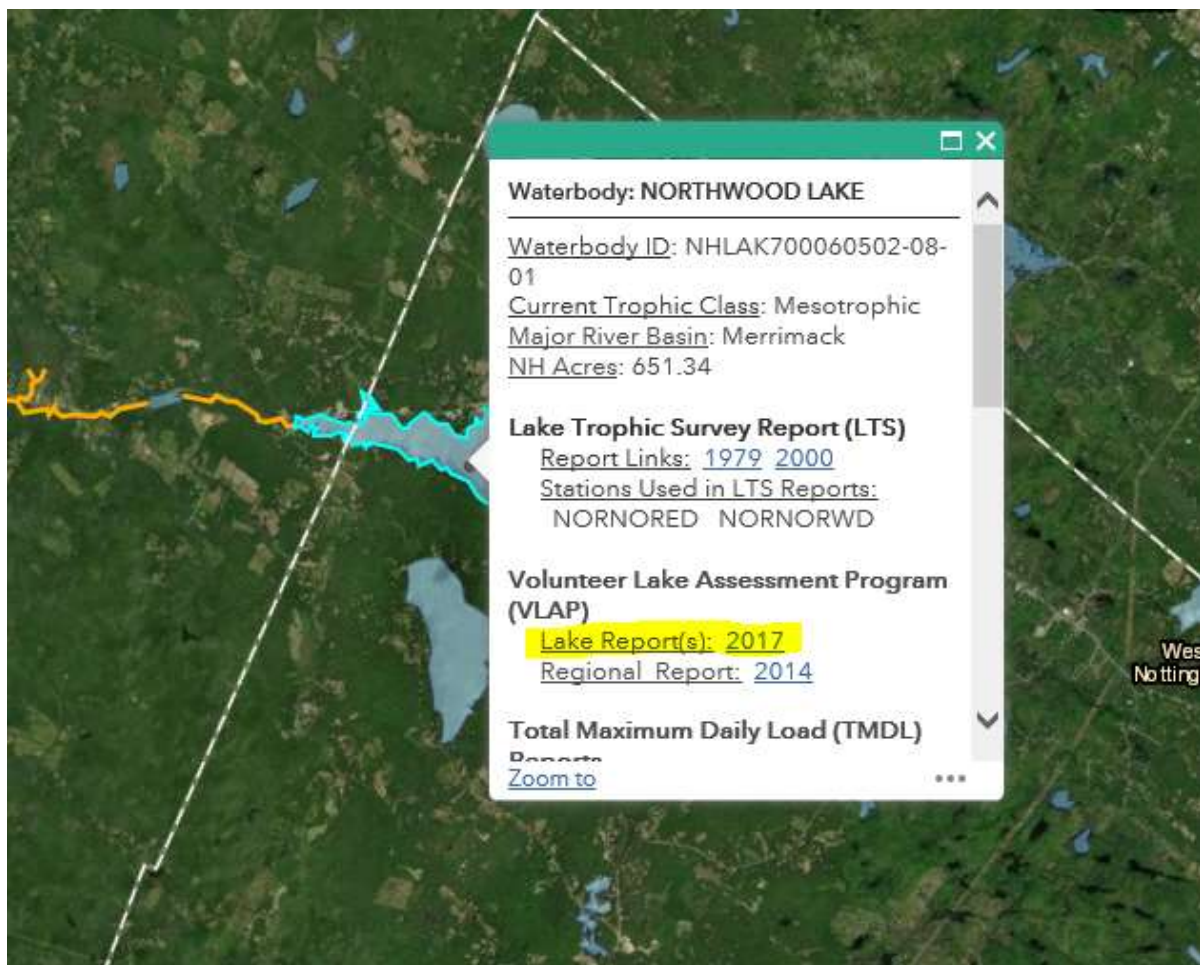
Step 1: Find your NH waterbody of interest. Type in the name of the waterbody in the search bar in the top left corner. The correct location will appear as you type in the search bar (seen highlighted in yellow below). (You can also zoom into the waterbody on the map and click on the lake, rather than use the search bar.)



Step 2: After you've searched for the waterbody, a *Search result* box will appear. Click "Zoom to" and you will be brought to the waterbody.

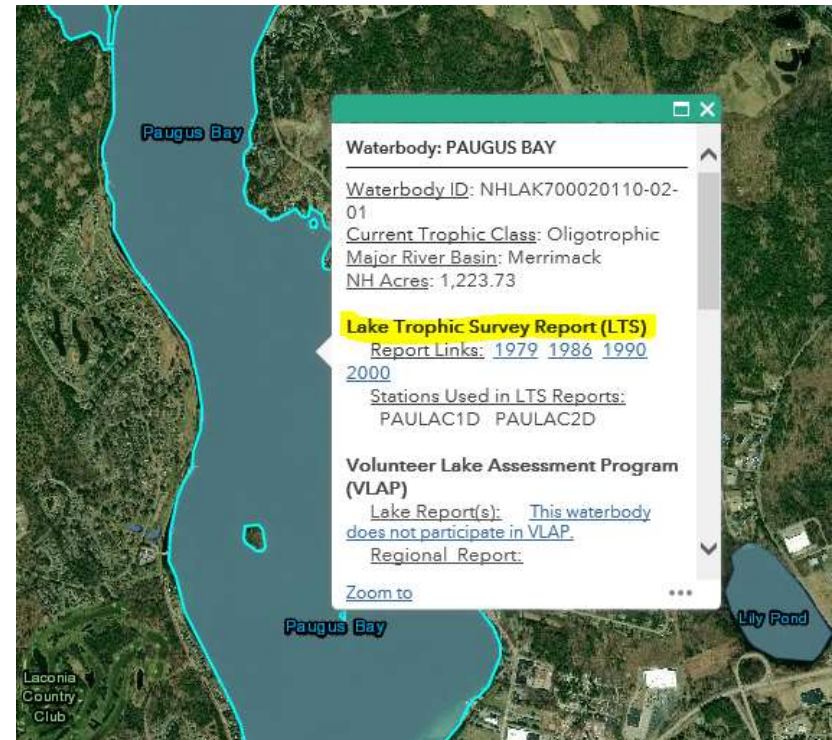
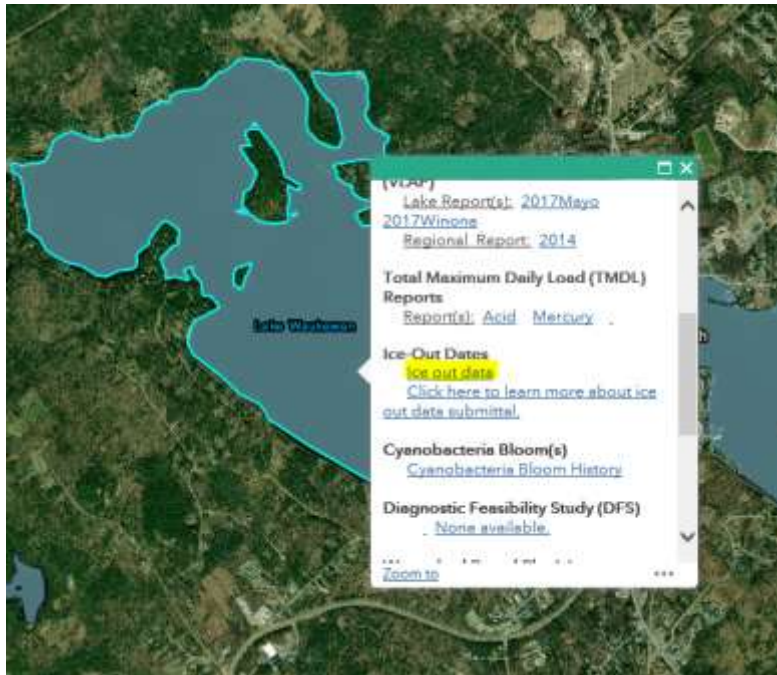


Step 3: Click on the waterbody and an information box will appear. This information box contains VLAP data collected at that lake. Specifically, each VLAP lake's annual lake reports can be accessed here: click on *Lake Report(s)* (highlighted in yellow below) to open that year's report.



A variety of different data can be viewed from each lake's pop-up information box:

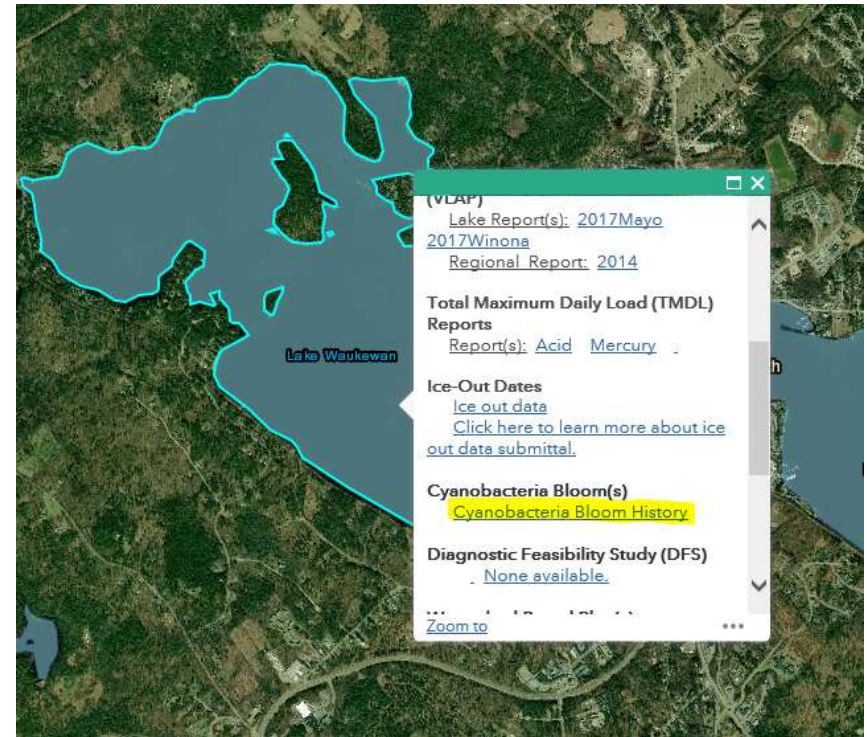
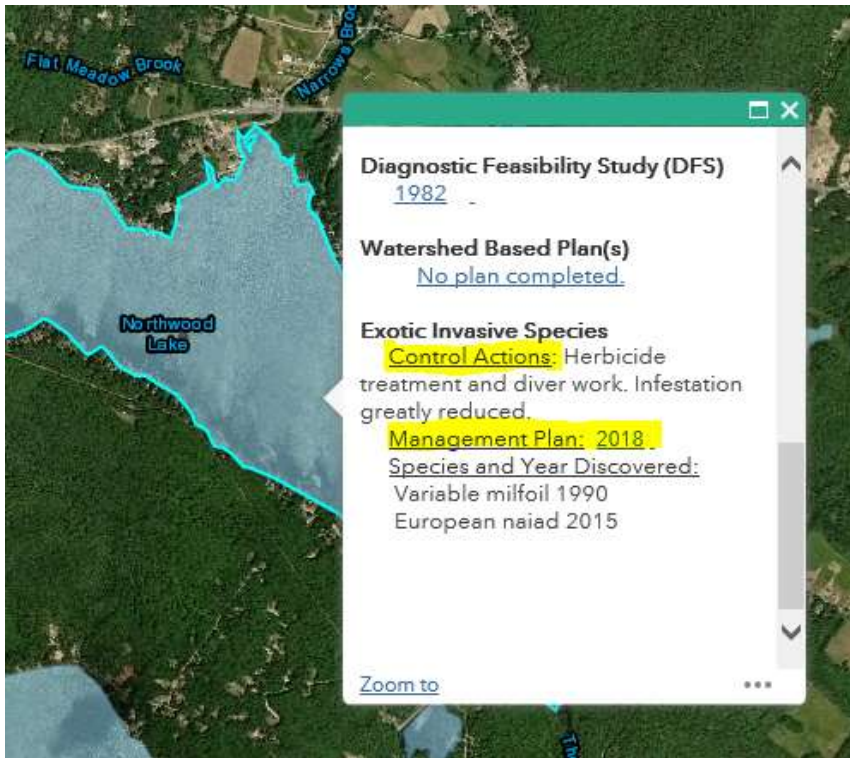
Ice out data can be accessed here; ice out data tells you when the waterbody is ice-free in the spring or when the ice cover is broken up enough to navigate a boat in. (More information: <https://www.des.nh.gov/organization/divisions/water/wmb/vlap/ice-in-out.htm>)



Lake trophic survey reports can also be found here; these contain historic data on physical, chemical, and biological characteristics.

A variety of different data can be viewed from each lake's pop-up information box:

Plans detailing the management of exotic invasive species (if present) can be accessed here, as well as information on what actions are being used to control these populations.



Information detailing if (and when) a waterbody has had a warning issued due to a cyanobacteria bloom can be viewed here too.